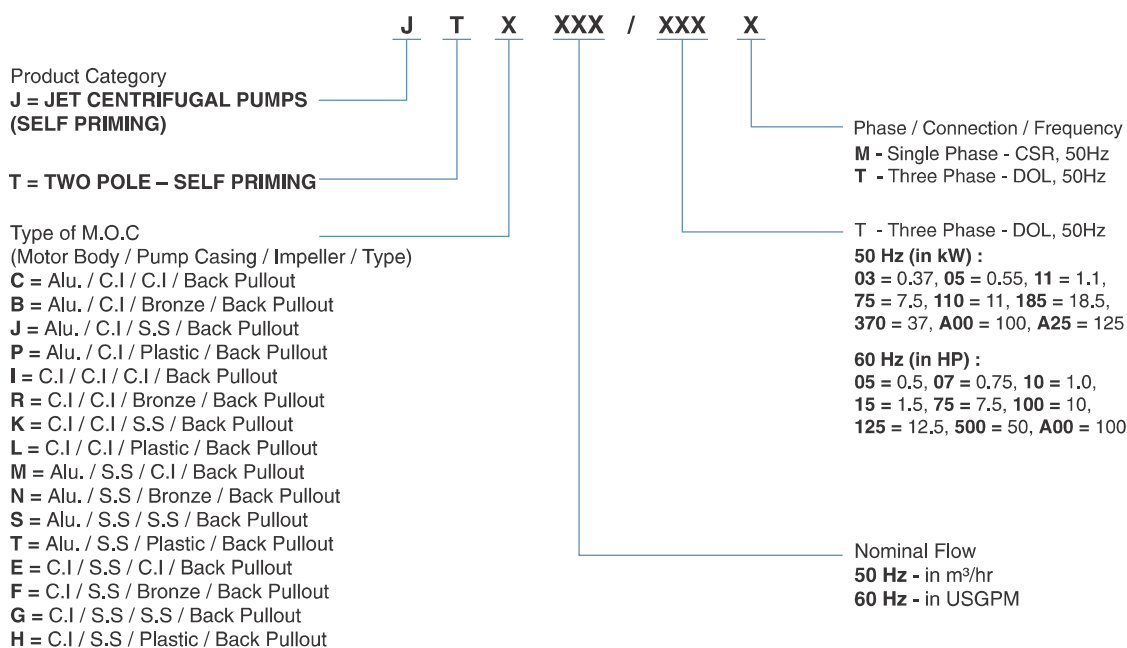


Jet Pumps

JTB & JTS SERIES

Model Identification Code (MIC)



Sample Description :

Single Phase : JTB-3/07M, 0.75kW, 1Ph, 220-230V, 50Hz 1"x1" Jet Self-priming Pump
 JTS-3/07M, 0.75kW, 1Ph, 220-230V, 50Hz 1"x1" Jet Self-priming Pump

Three Phase : JTB-3/07T, 0.75kW, 3Ph, 220-230V, 50Hz 1"x1" Jet Self-priming Pump
 JTS-3/07T, 0.75kW, 3Ph, 220-230V, 50Hz 1"x1" Jet Self-priming Pump

Jet Pumps

JTB & JTS SERIES

JTB & JTS Series



Description

JT Series pumps are self-priming type supplied with radial flow impeller for shallow well and sump application. These pumps are available in both single phase and three phase power supply and powered by a totally enclosed fan cooled motor for continuous duty. Jet pump's casing and ejector unit are designed carefully to give the best hydraulic efficiency and suction lift characteristic. The back pull out design facilitates ease of maintenance. JTS series are offered with fully stainless-steel pump portion for hygiene applications. Single phase pumps are thermally protected.

Design Features

- High efficiency
- Compact and rigid construction
- Back pull-out design
- Single phase pumps are thermally protected

Applications

- Booster and transfer application
- Pumping water from shallow well and sump
- Residence
- RO Systems
- Cooling system
- Washing systems
- Utility application in buildings and industries

Jet Pumps

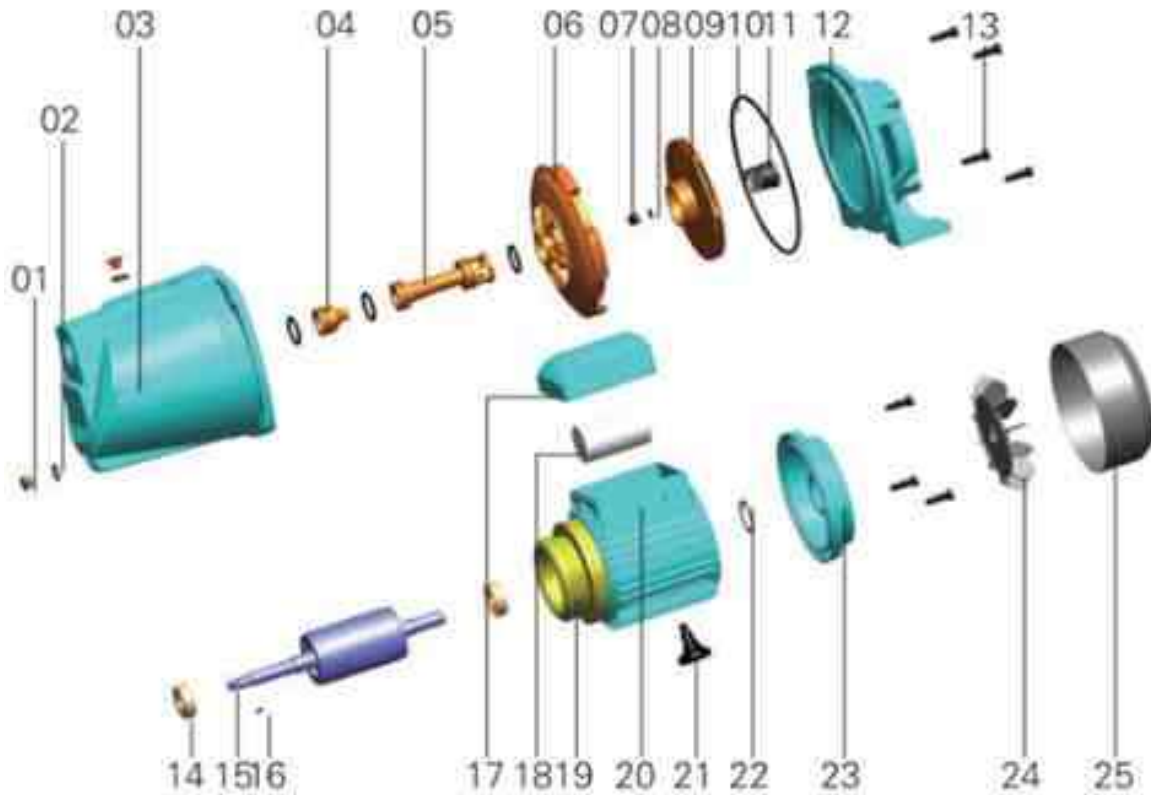
JTB & JTS SERIES

SPECIFICATIONS

	JTB Series	JTS Series
Power Range(kW)	0.37 - 1.5kW	0.37 - 1.1kW
Speed	2850rpm	2850rpm
Versions	Single phase – 220-230V, 50Hz, A.C. Supply	Single phase – 220-230V, 50Hz, A.C. Supply
	Three phase - 380-415V, 50Hz A.C. supply	Three phase - 380-415V, 50Hz A.C. supply
Type of Duty	S1 Continuous Duty	S1 Continuous Duty
Degree of Protection	IP 44	IP 54
Class of Insulation	B	F
Electrical Connection	PSC - Single Phase	PSC - Single Phase
	DOL - Three Phase	DOL - Three Phase
Flow	to 6m³/h	to 4.8 m³/h
Head	to 56m	to 48m
Suction Lift with foot valve	to 7m	to 7 m
Shaft seal	Mechanical seal (Ceramic & Carbon)	Mechanical seal (Ceramic & Carbon)
Maximum Liquid Temperature	to 35°C	to 35°C
Maximum Ambient Temperature	to 50°C	to 50°C
Maximum Working Pressure	to 5.6bar	to 4.8bar
Suction & Delivery Size	1" x 1" & 1¼" x 1"	1" x 1"

Material of Construction

PART NAME	JTB Series EN / DIN / SAE	JTS Series EN / DIN / SAE
Pump Casing	Cast Iron - EN-GJL-220 / GG20 / ASTM A48 Class 30 B	X5CrNi 18 9 / 1.4301 / ASTM A240 AISI 304
Impeller	CuZn38 / 2.0360 / ASTM B584 C87600	X5CrNi 18 9 / 1.4301 / ASTM A240 AISI 304
Diffuser	Engineering Plastic	Engineering Plastic
Venturi and Nozzle	Engineering Plastic	Engineering Plastic
Shaft	X5CrNi 18 9 / 1.4301 / ASTM A276 AISI 304	X5CrNi 18 9 / 1.4301 / ASTM A276 AISI 304
Shaft Seal	Mechanical Seal (Ceramic & Carbon)	Mechanical Seal (Ceramic & Carbon)
Motor Body	Aluminium - ADC 12 / ASTM A383 ADC12	Aluminium - ADC 12 / ASTM A383 ADC12

Jet Pumps**JTB & JTS SERIES****Exploded View and Part Details
JTB SERIES**

Part No.	Part Name
01	Copper Plug
02	"O" Ring
03	Pump Casing
04	Venturi Nozzle
05	Venturi Tube
06	Diffuser
07	Cap Nut
08	Gasket
09	Impeller
10	"O" Ring
11	Mechanical Seal
12	Pump support
13	Hexagonal head bolt
14	Bearing
15	Rotor

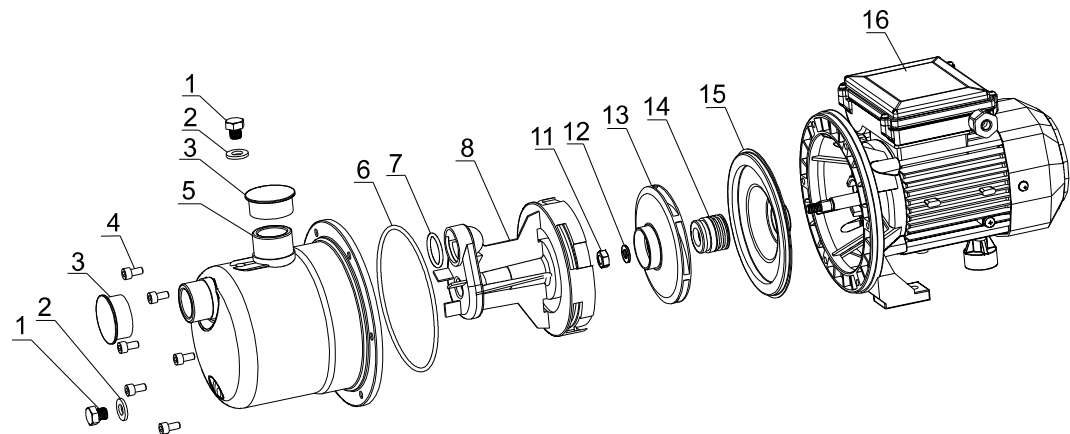
Part No.	Part Name
16	Key
17	Capacitor Box
18	Capacitor
19	Stator
20	Base
21	Arm-Brace
22	Wave Washer
23	End plate
24	Fan
25	Fan cover

Jet Pumps

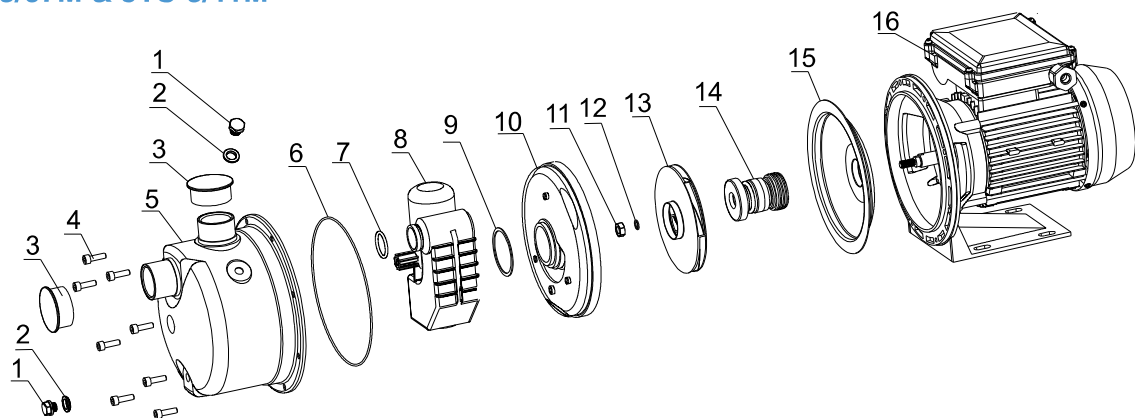
JTB & JTS SERIES

Exploded View and Part Details

JTS-3/05M



JTS-3/07M & JTS-3/11M

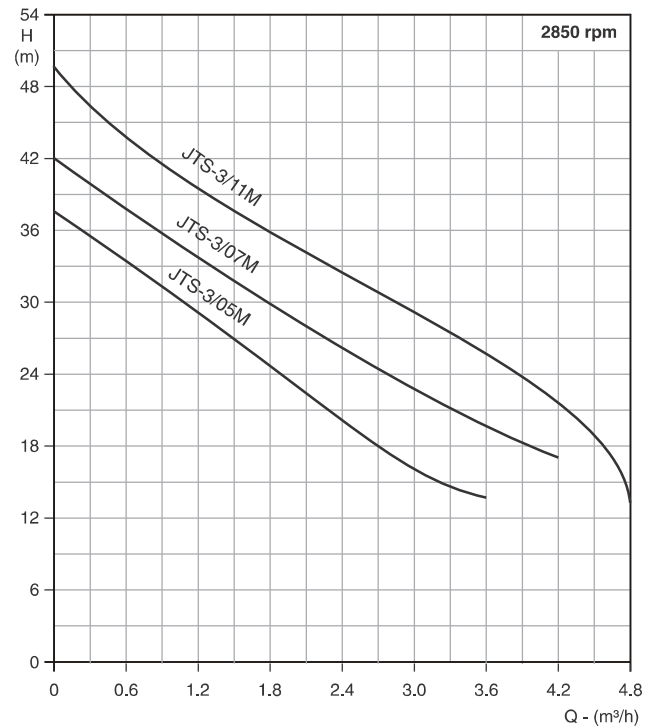
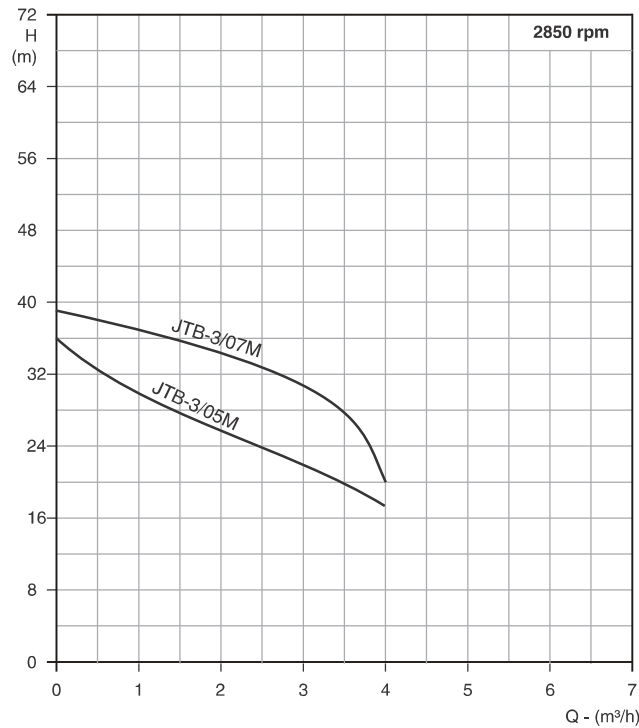


Part No.	Part Name
1	Plug
2	Washer
3	Dust Cap
4	Inside Hexagonal Bolt
5	Delivery Port
6	O-Ring
7	O-Ring
8	Ejector
9	Impeller Nut
10	Washer
11	Impeller
12	Mechanical Seal
13	Pump Cover
14	Terminal Box
15	Motor
16	Motor

Jet Pumps

JTB & JTS SERIES

Performance Curves & Table



Performance Table

Pump Model	Power		Current (Amps)	Suction & Delivery size (inches)	Suction Lift (m)	Flow (m³/h)	0	1	2	3	4
	kW	HP	1 Ph 220V								
JTB-3/05M	0.55	0.75	4.6	1 x 1	7	Head (m)	36	30	26	22	17
JTB-3/07M	0.75	1	5	1 x 1	7		39	37	31	26	18

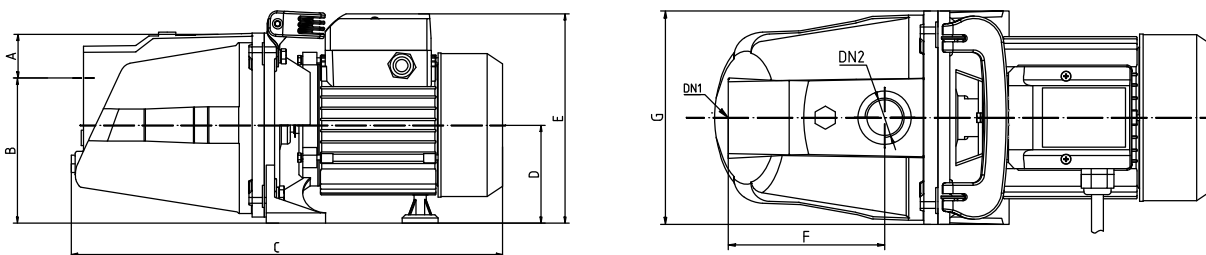
Pump Model		Power		Current (Amps)		Suction & Delivery size (inches)	Suction Lift (m)	Flow (m³/h)	0	0.6	1.2	1.8	2.4	3	3.6	4.2	4.8
Single Phase 220V	Three Phase 380V	kW	HP	1 Ph 220V	3 Ph 380V				Head (m)	38	33	29	24	20	16	14	-
JTS-3/05M	JTS-3/05T	0.55	0.75	2.4	1	1 x 1	6	42	36	34	30	26	22	20	17	-	
JTS-3/07M	JTS-3/07T	0.75	1	3.8	1.4	1 x 1	6	50	44	40	36	32	29	25	22	10	
JTS-3/11M	JTS-3/11T	1.1	1.5	5.2	1.8	1 x 1	6										

Jet Pumps

JTB & JTS SERIES

General Arrangement Drawing (GAD), Dimensions & Weight Data

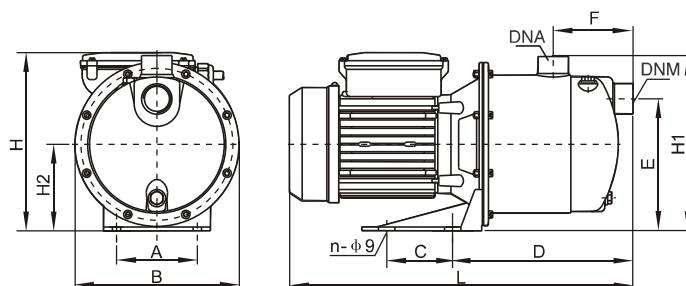
JTB Series



Pump Model	Power (kW)	Dimensions (mm)										Net Weight (kg)
		DNA	DNM	A	B	C	D	E	F	G	H	
1Ph 220-230V												
JTB-3/05M	0.55	1"	1"	43	142	443.5	96	205	25	164	25	13.7
JTB-3/07M	0.75	1"	1"	43	142	443.5	96	205	25	164	25	14.7

All dimensions are in mm unless otherwise specified

JTS Series



Pump Model		Power (kW)	Dimensions (mm)													Net Weight (kg)
1Ph 220-230V	3Ph 380V		DNA	DNM	A	B	C	D	E	F	L	H	H1	H2	n	
JTS-3/05M	JTS-3/05T	0.55	1"	1"	100	171	-	198	128	90	358	177	178	88	2	8.3
JTS-3/07M	JTS-3/07T	0.75	1"	1"	98	184	-	160	148	80	357	200	202	98	2	9
JTS-3/11M	JTS-3/11T	1.1	1"	1"	98	184	-	160	148	80	357	200	202	98	2	11

All dimensions are in mm unless otherwise specified